

DELUXE VILLA B (2 Units)

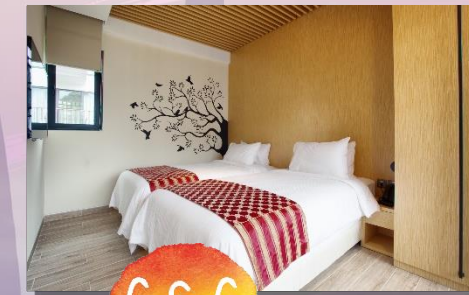
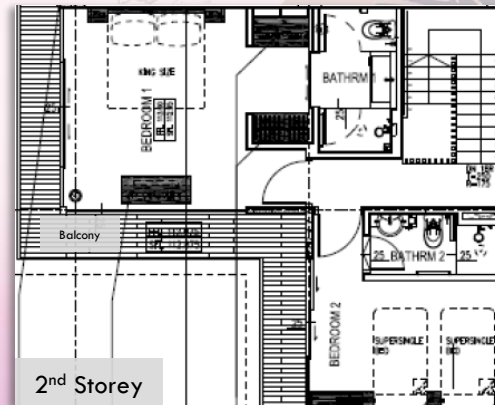
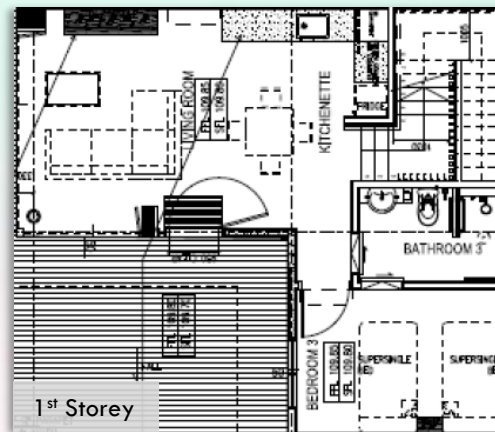
- Sea-Facing
- Three-Bedroom Villa (Two-Storey Villa)
- Floor Area: 99sqm (1st storey)
87sqm (2nd storey) – including balcony
- Night Occupancy: 6 Pax

Important Notice: All chalet bookings are subject to the prevailing authorities' guidelines and to any additional premise owners' house rules.

Included Amenities

- 1 King Size Bed & 4 Super Single Beds
- Fully Air-Conditioned with LED TV, Dining Table Set & Sofa Set
- Standing Fridge & Microwave Oven
- Water Dispenser & Illy Coffee Machine
- Hair Dryer, Torch Light & Digital Room Safe
- Induction Cooker with Pot and Pan
- Complimentary Beverages - Coffee & Tea (Charges apply for additional beverages requests)
- Toiletries & Bath Amenities (Additional at \$5.00 per set)
- Complimentary Parking for 3 Vehicles (IU registration upon check in)
- Gas Operated BBQ pit:
Off-Peak: \$18 (Member) and \$30 (Non-Member)
Peak & Super Peak: \$28 (Member) and \$50 (Non-Member)
- Patio area is a common area shared between Villa B1 and B2
*For private events, the Patio is available for rental at \$150 for 2hrs
(Applicable for Deluxe Villa's guest only)

Floor Plan



PERIOD	MEMBERS	PUBLIC OFFICERS	HTNS	PUBLIC
OFF-PEAK MON-THUR (EXCL. SCH HOLS, EVE & ON P.H.)	\$446.84	\$542.93	\$570.08	\$649.43
PEAK FRI-SUN (EXCL. SCH HOLS), MON-THUR (SCH HOLS)	\$563.93	\$692.48	\$727.10	\$825.88
SUPER-PEAK FRI-SUN (SCHOOL HOLS), EVE & ON PUBLIC HOLS	\$625.12	\$773.29	\$811.95	\$921.47

