

SUPERIOR SUITE (5 Units)

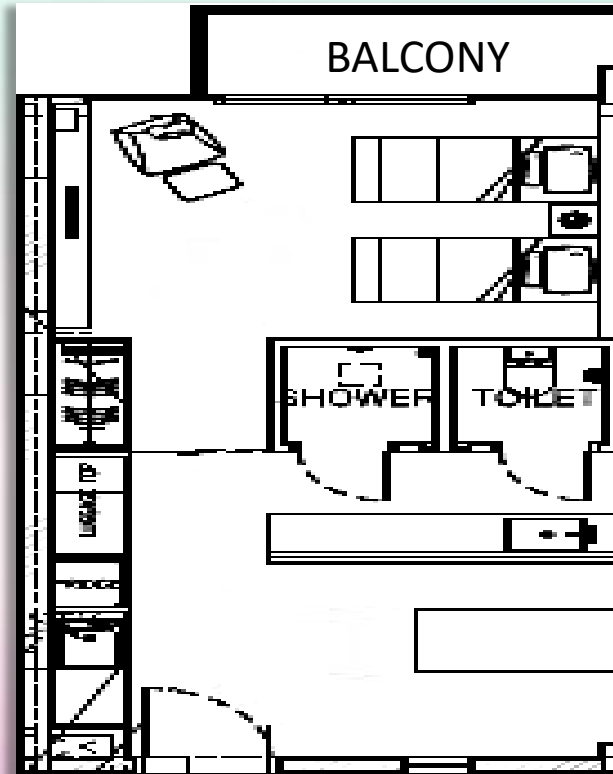
- Single Bedroom Suite
- Located on the 3rd Level and 4th Level
- Floor Area: 43sqm
- Night Occupancy: 2 pax

Important Notice: All chalet bookings are subject to the prevailing authorities' guidelines and to any additional premise owners' house rules.

Included Amenities

- 2 Super Single Beds
- Fully Air-Conditioned with LED TV & Dining Table Set
- Mini Bar Fridge & Microwave Oven
- Water Dispenser & Illy Coffee Machine
- Hair Dryer, Torch Light & Digital Room Safe
- Complimentary Beverages - Coffee & Tea (Charges apply for additional beverages requests)
- Toiletries & Bath Amenities (Additional at \$5.00 per set)
- Complimentary Parking for 1 Vehicle (IU registration upon check in)
- Rooftop BBQ Pits (subject to availability):
Off-Peak: \$18 (Member) and \$30 (Non-Member)
Peak & Super Peak: \$28 (Member) and \$50 (Non-Member)

Floor Plan



PERIOD	MEMBERS	PUBLIC OFFICERS	HTNS	PUBLIC
OFF-PEAK MON-THUR (EXCL. SCH HOLS, EVE & ON P.H.)	\$168.07	\$206.68	\$217.01	\$255.50
PEAK FRI-SUN (EXCL. SCH HOLS), MON-THUR (SCH HOLS)	\$265.30	\$330.72	\$347.26	\$400.92
SUPER-PEAK FRI-SUN (SCHOOL HOLS), EVE & ON PUBLIC HOLS	\$300.92	\$377.01	\$395.86	\$459.91

CSC
AT CHANGI