



SAVE MORE

WHEN YOU BOOK MORE CHALET NIGHTS WITH US

VALID FOR STAYS FROM

15 Jan to 29 May 2026



Treat yourself to a perfect getaway at Civil Service Club chalets – from cosy single-room units to spacious colonial bungalows, and even dog-friendly chalets for your furriends!

BOOK MIN. 2-NIGHT STAY

30% OFF
OFF-PEAK PERIOD

20% OFF
PEAK PERIOD

PROMO CODE: SAVEMORE

Terms & Conditions:

- Valid for stays from 15 Jan to 29 May 2026
- Applicable for all room types and rate types at Changi, Changi II and Loyang
- Blackout dates: Super-peak periods (eve of PH, PH and school holidays)
- Strictly applicable for online bookings from 15 Jan 2026 using promo code 'SAVEMORE'
- Offer does not apply to any existing bookings made before 15 Jan 2026
- Booking window for each member type applies.
 - Booking window refers to the time between the day when a booking is made and the check-in day.
- Promotions not valid in conjunction with other discounts, promotions or vouchers.
- Promotions not valid for corporate or wedding bookings.
- All bookings will be subjected to prevailing authorities' guidelines and to any additional premise owners' house rules.
- For enquiries, please contact
 - Changi: rooms@csc.sg or 6709 4706
 - Changi II: changi2@csc.sg or 6545 2343
 - Loyang: loyang@csc.sg or 6581 9033

BOOK NOW!

SCAN ME

Pawsome Chalet Promotion

ENJOY 20% OFF WHEN YOU BOOK:
• CSC @ CHANGI II'S PET-FRIENDLY CHALETS
• CSC @ LOYANG'S DOG-FRIENDLY CHALETS

PROMOTION IS VALID FROM 15 APR TO 15 SEP 2026

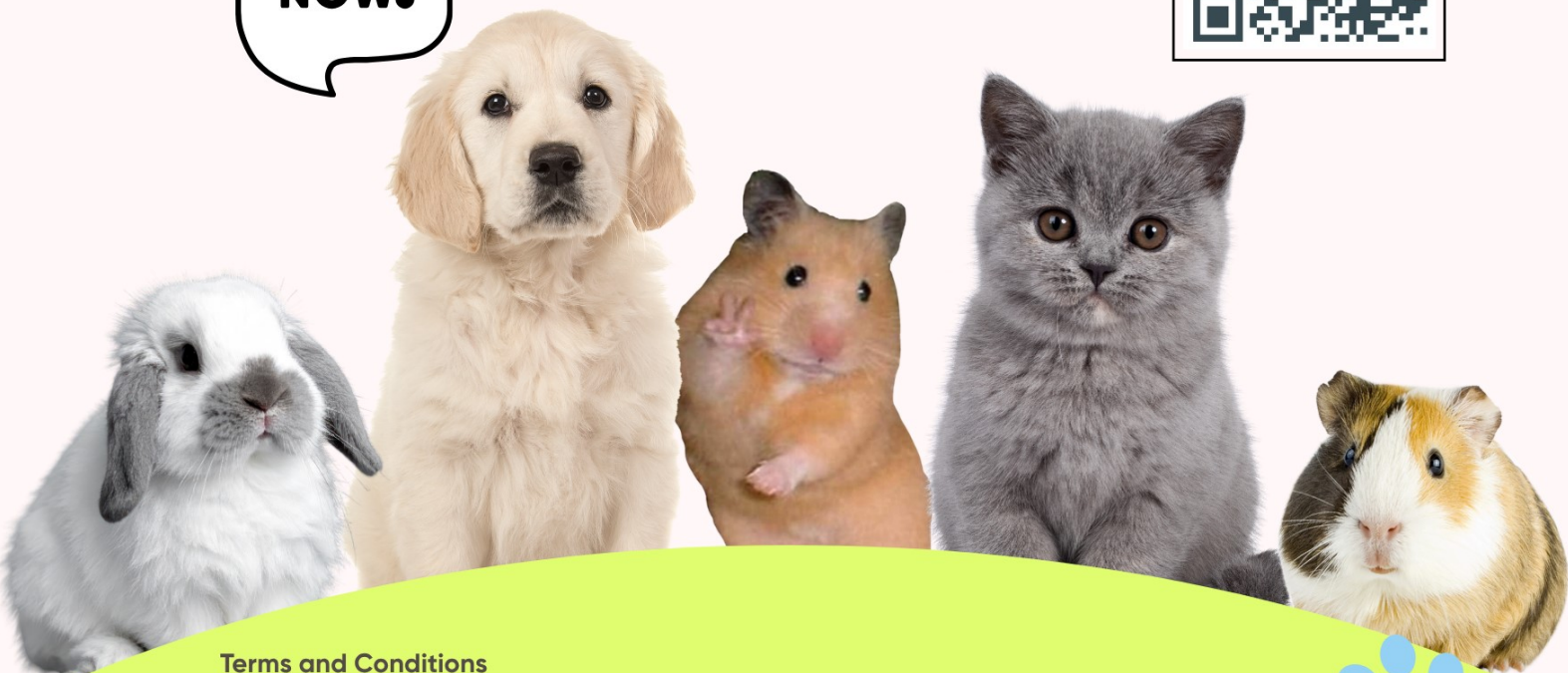
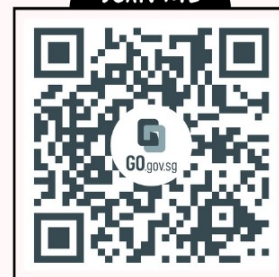
APPLICABLE FOR OFF-PEAK & PEAK PERIODS ONLY

PROMO CODE

PAWS20

**BOOK!
NOW!**

SCAN ME



Terms and Conditions

- Applicable for bookings made from 15 Apr 2026
- Promotion does not apply to any existing bookings made before 15 Apr 2026
- Promotion is not valid with other discounts, offers, vouchers, corporate or wedding bookings
- Booking window for each member type applies. Booking window refers to the time between the day when a booking is made and the check-in day.
- All bookings will be subjected to prevailing authorities' guidelines and to any additional premise owners' house rules.
- For enquiries, please contact
 - **Changi II:** changi2@csc.sg or 6545 2343
 - **Loyang:** loyang@csc.sg or 6581 9033

