

# DELUXE SUITE (3 Units)

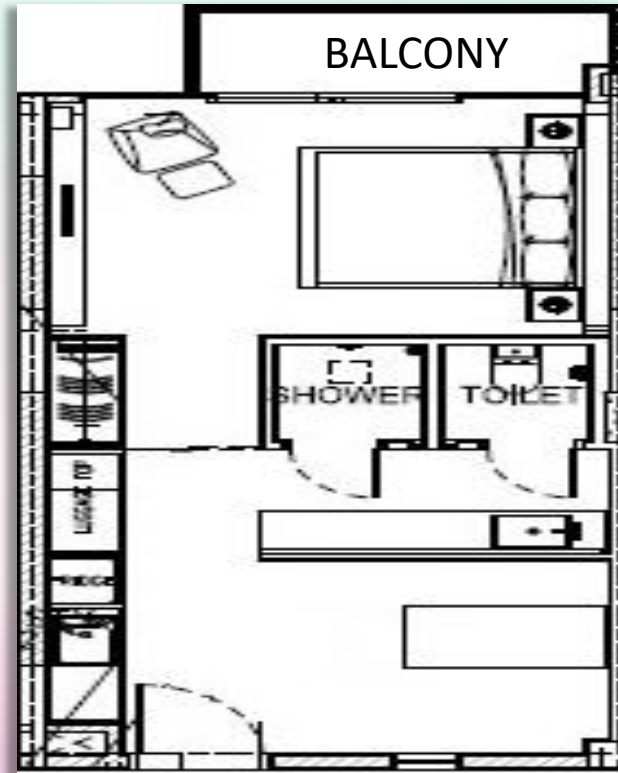
- Single Bedroom Suite
- Located on the 3<sup>rd</sup> Level
- Floor Area: 43sqm
- Night Occupancy: 2 pax

**Important Notice:** All chalet bookings are subject to the prevailing authorities' guidelines and to any additional premise owners' house rules.

## Included Amenities

- 1 King Size Bed
- Fully Air-Conditioned with LED TV & Dining Table Set
- Mini Bar Fridge & Microwave Oven
- Water Dispenser & Illy Coffee Machine
- Hair Dryer, Torch Light & Digital Room Safe
- Complimentary Beverages - Coffee & Tea (Charges apply for additional beverages requests)
- Toiletries & Bath Amenities (Additional at \$5.00 per set)
- Complimentary Parking for 1 Vehicle (IU registration upon check in)
- Rooftop BBQ Pits (subject to availability):  
Off-Peak: \$18 (Member) and \$30 (Non-Member)  
Peak & Super Peak: \$28 (Member) and \$50 (Non-Member)

## Floor Plan



| PERIOD  | MEMBERS  | PUBLIC OFFICERS | HTNS     | PUBLIC   |
|---|----------|-----------------|----------|----------|
| <b>OFF-PEAK</b><br>MON-THUR (EXCL. SCH HOLS, EVE & ON P.H.)         | \$168.07 | \$206.68        | \$217.01 | \$255.50 |
| <b>PEAK</b><br>FRI-SUN (EXCL. SCH HOLS),<br>MON-THUR (SCH HOLS)     | \$265.30 | \$330.72        | \$347.26 | \$400.92 |
| <b>SUPER-PEAK</b><br>FRI-SUN (SCHOOL HOLS),<br>EVE & ON PUBLIC HOLS | \$300.92 | \$377.01        | \$395.86 | \$459.91 |

