

DELUXE VILLA B (2 Units)

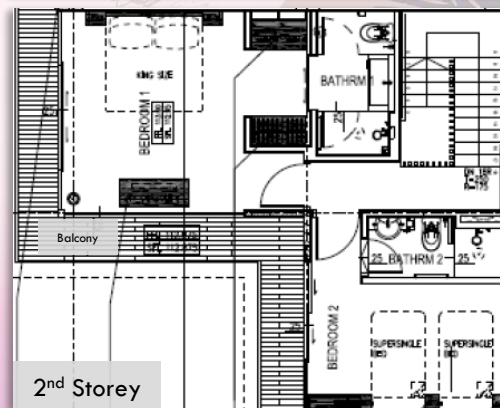
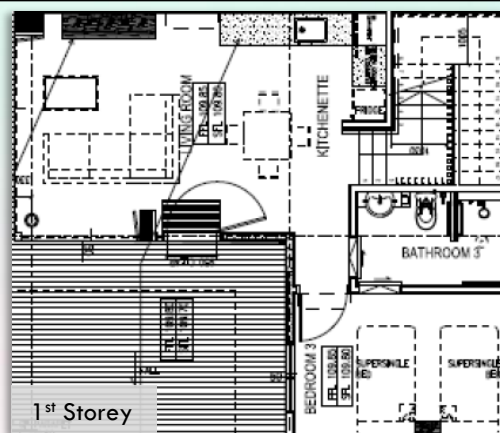
- Sea-Facing
- Three-Bedroom Villa (Two-Storey Villa)
- Floor Area: 99sqm (1st storey)
87sqm (2nd storey) – including balcony
- Night Occupancy: 8 Pax*

* All chalet bookings are subject to the prevailing authorities' guidelines and to any additional premise owners' house rules. For the latest Covid-19 Advisory and updates at CSC @ Changi I: www.csc.sg/covid19

Included Amenities

- 1 King Size Bed & 4 Super Single Beds
 - Fully Air-Conditioned with LED TV, Dining Table Set & Sofa Set
 - Standing Fridge & Microwave Oven
 - Water Dispenser & Nespresso Coffee Machine
 - Hair Dryer, Torch Light & Digital Room Safe
 - Induction Cooker with Pot and Pan
 - Complimentary Beverages - Coffee & Tea (Charges apply for additional beverages requests)
 - Toiletries & Bath Amenities (Additional at \$5.00 per set)
 - Complimentary Parking for 3 Vehicles (IU registration upon check in)
 - Gas Operated BBQ pit:
Off-Peak: \$18 (Member) and \$30 (Non-Member)
Peak & Super Peak: \$28 (Member) and \$50 (Non-Member)
 - Patio area is a common area shared between Villa B1 and B2
- *For private events, the Patio is available for rental at \$150 for 2hrs
(Applicable for Deluxe Villa's guest only)

Floor Plan



PERIOD	MEMBERS	PUBLIC OFFICERS	PUBLIC
OFF-PEAK MON-THUR (EXCL. SCH HOLS, EVE & ON P.H.)	\$425.57/night	\$517.07/night	\$618.50/night
PEAK FRI-SUN (EXCL. SCH HOLS), MON-THUR (SCH HOLS)	\$537.08/night	\$659.51/night	\$786.56/night
SUPER-PEAK FRI-SUN (SCHOOL HOLS), EVE & ON PUBLIC HOLS	\$595.35/night	\$736.47/night	\$877.59/night

