

# FAMILY SUITE (3 Units)

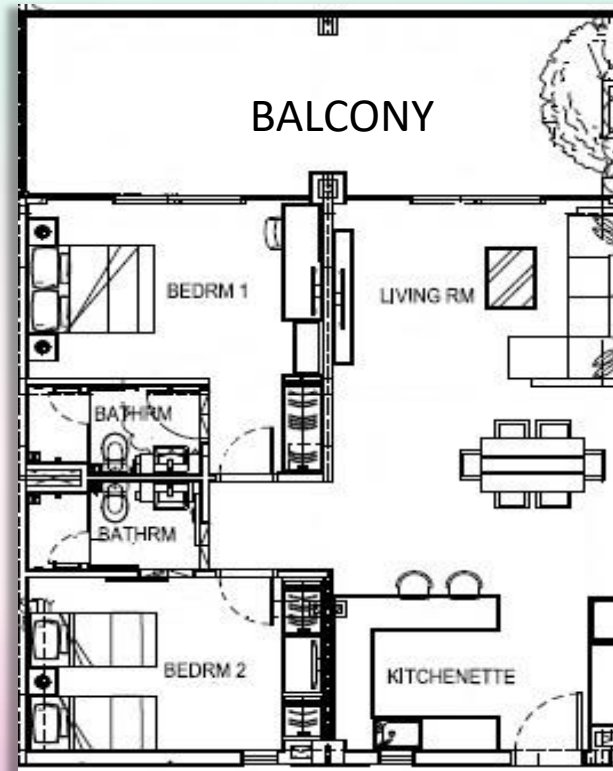
- Two-Bedroom Suite
- Located on the 2<sup>nd</sup> Level
- Floor Area: 86sqm
- Night Occupancy: 4 Pax

**Important Notice:** All chalet bookings are subject to the prevailing authorities' guidelines and to any additional premise owners' house rules.

## Included Amenities

- 1 King Size Bed & 2 Super Single Beds
- Fully Air-Conditioned with LED TV, Dining Table Set & Sofa Set
- Standing Fridge & Microwave Oven
- Water Dispenser & Illy Coffee Machine
- Hair Dryer, Torch Light & Digital Room Safe
- Induction Cooker with Pot and Pan
- Complimentary Beverages - Coffee & Tea (Charges apply for additional beverages requests)
- Toiletries & Bath Amenities (Additional at \$5.00 per set)
- Complimentary Parking for 2 Vehicles (IU registration upon check in)
- Rooftop BBQ Pits (subject to availability):  
Off-Peak: \$18 (Member) and \$30 (Non-Member)  
Peak & Super Peak: \$28 (Member) and \$50 (Non-Member)

## Floor Plan



PERIOD	MEMBERS	PUBLIC OFFICERS	HTNS	PUBLIC
<b>OFF-PEAK</b> MON-THUR (EXCL. SCH HOLS, EVE & ON P.H.)	\$326.45	\$402.85	\$422.99	\$478.10
<b>PEAK</b> FRI-SUN (EXCL. SCH HOLS), MON-THUR (SCH HOLS)	\$412.34	\$498.44	\$523.36	\$595.46
<b>SUPER-PEAK</b> FRI-SUN (SCHOOL HOLS), EVE & ON PUBLIC HOLS	\$459.58	\$574.18	\$602.89	\$676.05

# HCP FAMILY SUITE (1 Unit)

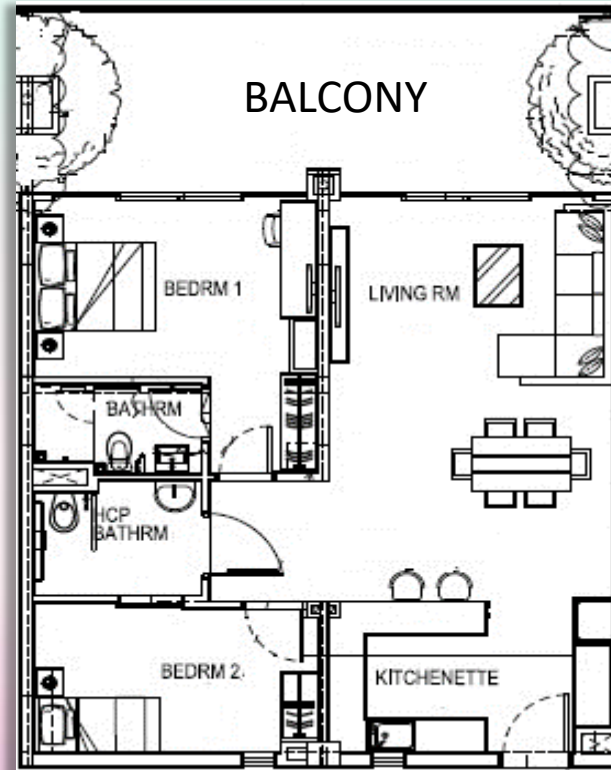
- Two-Bedroom Suite
- Located on the 2<sup>nd</sup> Level
- Floor Area: 86sqm
- Night Occupancy: 4 Pax

**Important Notice:** All chalet bookings are subject to the prevailing authorities' guidelines and to any additional premise owners' house rules.

## Included Amenities

- 1 King Size Bed, 1 Super Single Bed & 1 Roller Bed
- Full Air-Conditioned with LED TV, Dining Table Set & Sofa Set
- Standing Fridge & Microwave Oven
- Water Dispenser & Illy Coffee Machine
- Hair Dryer, Torch Light & Digital Room Safe
- Induction Cooker with Pot and Pan
- HCP-Friendly Bathroom
- Complimentary Beverages - Coffee & Tea (Charges apply for additional beverages requests)
- Toiletries & Bath Amenities (Additional at \$5.00 per set)
- Complimentary Parking for 2 Vehicles (IU registration upon check in)
- Rooftop BBQ Pits (subject to availability):  
Off-Peak: \$18 (Member) and \$30 (Non-Member)  
Peak & Super Peak: \$28 (Member) and \$50 (Non-Member)

## Floor Plan



PERIOD	MEMBERS	PUBLIC OFFICERS	HTNS	PUBLIC
<b>OFF-PEAK</b> MON-THUR (EXCL. SCH HOLS, EVE & ON P.H.)	\$326.45	\$402.85	\$422.99	\$478.10
<b>PEAK</b> FRI-SUN (EXCL. SCH HOLS), MON-THUR (SCH HOLS)	\$412.34	\$498.44	\$523.36	\$595.46
<b>SUPER-PEAK</b> FRI-SUN (SCHOOL HOLS), EVE & ON PUBLIC HOLS	\$459.58	\$574.18	\$602.89	\$676.05