

# FAMILY SUITE PLUS (2 Units)

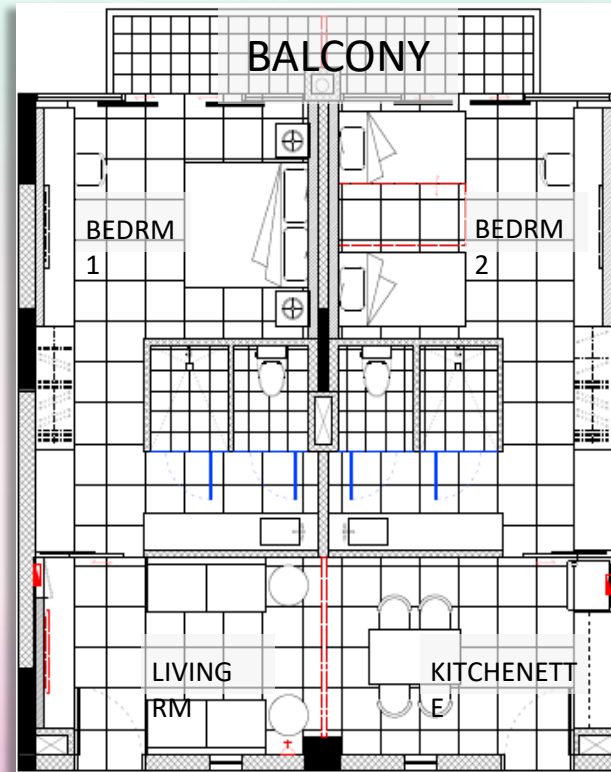
- Two-Bedroom Suite
- Located on the 3<sup>rd</sup> Level and 4<sup>th</sup> Level
- Floor Area: 86sqm
- Night Occupancy: 5pax

For all bookings, guests are to follow the social gathering rules of having **not more than 5 people (including children)** during the duration of their stay (no change of in-room guests and no visitors allowed) – aligning to MMTF (Multi- Ministry Task Force) ruling

## Included Amenities

- 1 King Size Bed, 2 Super Single Beds & 1 Pull-Out Bed
- Full Air-Conditioned with LED TV, Dining Table Set & Sofa Set
- Standing Fridge & Microwave Oven
- Water Dispenser Machine & Dolce Coffee Machine
- Hair Dryer, Torch Light & Digital Room Safe
- Complimentary Beverages - Coffee & Tea (Charges Applies for Additional Beverages)
- Toiletries & Bath Amenities (Additional at \$5.00 per set)
- 2 Complimentary Parking Coupons per night (Single Exit Use)

## Floor Plan



PERIOD	MEMBERS	PUBLIC OFFICERS	PUBLIC
<b>OFF-PEAK</b> MON-THUR (EXCL. SCH HOLS, EVE & ON P.H.)	\$261/night	\$326/night	\$392/night
<b>PEAK</b> FRI-SUN (EXCL. SCH HOLS), MON-THUR (SCH HOLS)	\$319/night	\$389/night	\$470/night
<b>SUPER-PEAK</b> FRI-SUN (SCHOOL HOLS), EVE & ON PUBLIC HOLS	\$376/night	\$475/night	\$563/night

