

PREMIER VILLA C (1 Unit)

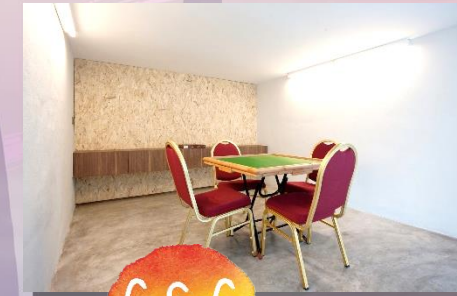
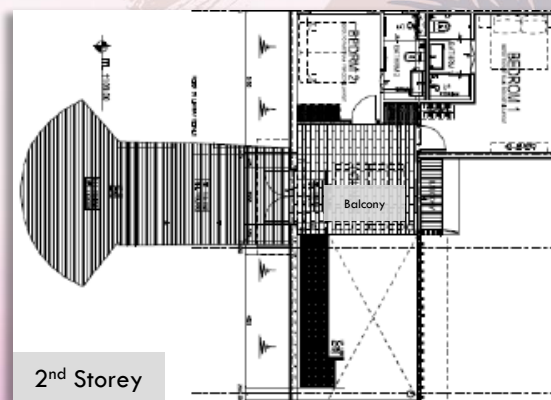
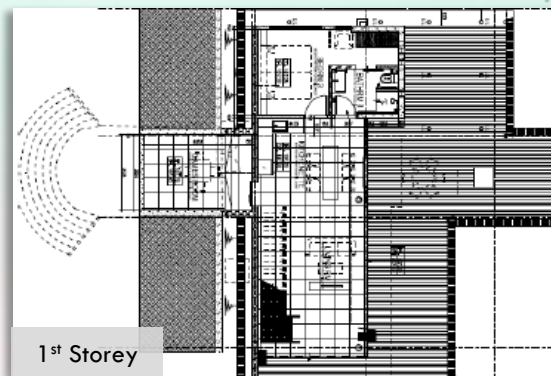
- Sea-Facing
- Three-Bedroom Villa (Two-Storey Villa)
- Floor Area: 130sqm (1st storey)
147sqm (2nd storey) – including balcony
- Night Occupancy: 5pax

For all bookings, guests are to follow the social gathering rules of having **not more than 5 people (including children)** during the duration of their stay (no change of in-room guests and no visitors allowed) – aligning to MMTF (Multi- Ministry Task Force) ruling

Included Amenities

- 1 King Size Bed & 4 Super Single Beds
- Activity Room
- Full Air-Conditioned with LED TV, Dining Table Set & Sofa Set
- Standing Fridge & Microwave Oven
- Water Dispenser Machine & Dolce Coffee Machine
- Hair Dryer, Torch Light & Digital Room Safe
- Induction Cooker with Pot and Pan
- Complimentary Beverages - Coffee & Tea (Charges Applies for Additional Beverages)
- Toiletries & Bath Amenities (Additional at \$5.00 per set)
- 3 Complimentary Parking Coupons per night (Single Exit Use)

Floor Plan



PERIOD	MEMBERS	PUBLIC OFFICERS	PUBLIC
OFF-PEAK MON-THUR (EXCL. SCH HOLS, EVE & ON P.H.)	\$499/night	\$581/night	\$673/night
PEAK FRI-SUN (EXCL. SCH HOLS), MON-THUR (SCH HOLS)	\$572/night	\$678/night	\$788/night
SUPER-PEAK FRI-SUN (SCHOOL HOLS), EVE & ON PUBLIC HOLS	\$647/night	\$775/night	\$903/night

