

# SUPERIOR SUITE (6 Units)

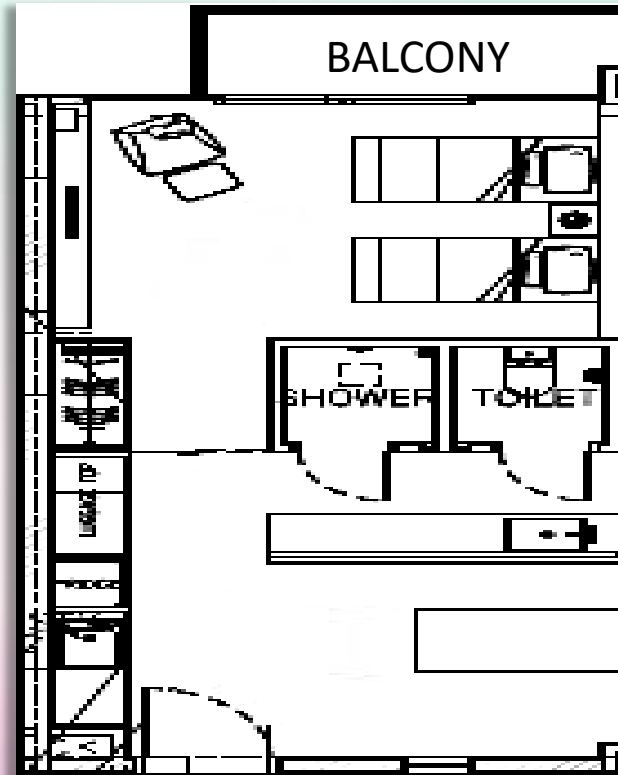
- Single Bedroom Suite
- Located on the 4<sup>th</sup> Level
- Floor Area: 43sqm
- Night Occupancy: 2pax

For all bookings, guests are to follow the social gathering rules of having **not more than 5 people (including children)** during the duration of their stay (no change of in-room guests and no visitors allowed) – aligning to MMTF (Multi- Ministry Task Force) ruling

## Included Amenities

- 2 Super Single Beds
- Full Air-Conditioned with LED TV & Dining Table Set
- Mini Bar Fridge & Microwave Oven
- Water Dispenser Machine & Dolce Coffee Machine
- Hair Dryer, Torch Light & Digital Room Safe
- Complimentary Beverages - Coffee & Tea (Charges Applies for Additional Beverages)
- Toiletries & Bath Amenities (Additional at \$5.00 per set)
- 1 Complimentary Parking Coupon per night (Single Exit Use)

## Floor Plan



PERIOD	MEMBERS	PUBLIC OFFICERS	PUBLIC
<b>OFF-PEAK</b> MON-THUR (EXCL. SCH HOLS, EVE & ON P.H.)	\$148/night	\$182/night	\$225/night
<b>PEAK</b> FRI-SUN (EXCL. SCH HOLS), MON-THUR (SCH HOLS)	\$223/night	\$278/night	\$337/night
<b>SUPER-PEAK</b> FRI-SUN (SCHOOL HOLS), EVE & ON PUBLIC HOLS	\$265/night	\$332/night	\$405/night

