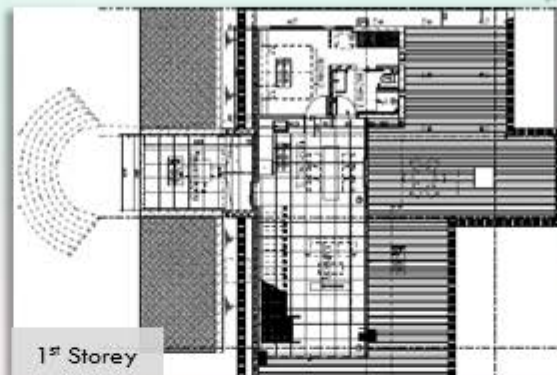


PREMIER VILLA C (1 Unit)

- Sea-Facing
- Three-Bedroom Villa (Two-Storey Villa)
- Floor Area: 130sqm (1st storey)
147sqm (2nd storey) – including balcony
- Night Occupancy: 6pax

Floor Plan



Included Amenities

- 1 King Size Bed & 4 Super Single Beds
- Activity Room
- Full Air-Conditioned with LED TV, Dining Table Set & Sofa Set
- Standing Fridge & Microwave Oven
- Kettle & Dolce Coffee Machine
- Hair Dryer & Torch Light
- Digital Room Safe & Digital Clock Dock
- Complimentary Beverages - Coffee, Tea & Mineral Water Bottle (Additional Beverages Charges Apply)
- Toiletries & Bath Amenities (Additional at \$5.00 per set)
- 3 Complimentary Parking Coupons per night (Single Exit Use)



PERIOD	MEMBERS	PUBLIC OFFICERS	PUBLIC
OFF-PEAK MON-THUR (EXCL. SCH HOLS, EVE & ON P.H.)	\$499/night	\$581/night	\$673/night
PEAK FRI-SUN (EXCL. SCH HOLS), MON-THUR (SCH HOLS)	\$572/night	\$678/night	\$788/night
SUPER-PEAK FRI-SUN (SCHOOL HOLS), EVE & ON PUBLIC HOLS	\$647/night	\$775/night	\$903/night

